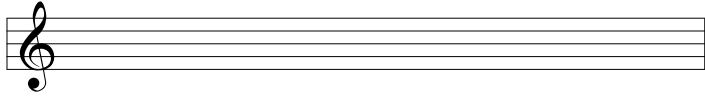


7th and Scale to 1 Day.

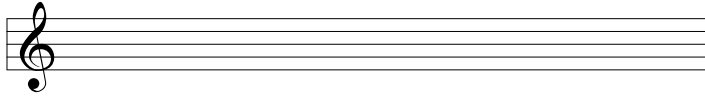
This page is your most important guide to a simple source of material to use to build a solo. The chord qualities are all in C, so you will have to transpose the scale according to your situation.

C C⁶ C⁶⁹ C[△] C⁶⁹_(b5) C⁶⁹_(#11) C[△]_(b5) C^{MAJ7}



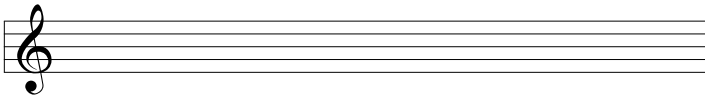
C Major scale (don't dwell on 4th degree)
or better yet, G Major scale

C_m C_m⁶ C_m⁶⁹ C_{min}[△] C_{min}



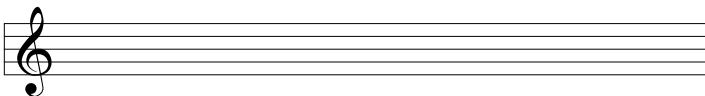
C jazz minor scale
(ascending form of melodic minor)

C_m⁷ C_m⁹ C_m¹¹



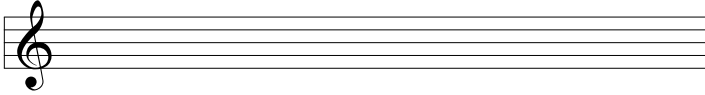
Bb Major scale (aka C Dorian)

C⁷ C⁹ C¹³



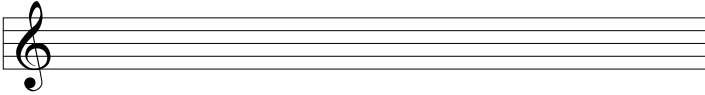
F Major scale (aka C mixolydian)
or G jazz minor scale

C^(#11)₇ C¹³_(#11) C⁷_(b5)



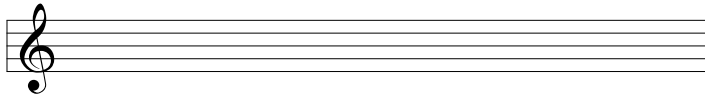
G jazz minor scale

C⁷_(b9) C¹³_(b9)



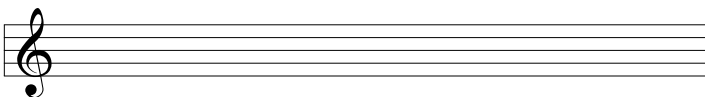
F harmonic minor scale (aka HMD)
(or Harmonic Minor of Destination)

C⁷_(#9) C⁷_{alt} C⁷_(b9)₍₊₅₎ C⁷₍₊₉₎₍₊₅₎



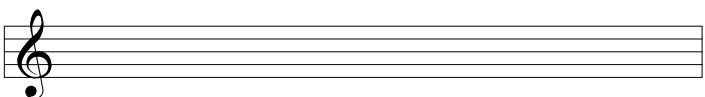
Db jazz minor scale

C[∅] C_m^{7(b5)}



Db Major scale (aka C Locrian)

C[∅]



V of next chord, use HMD